

Instructions:

Gather your tools!

Colour pencils, markers, or
paint & brush

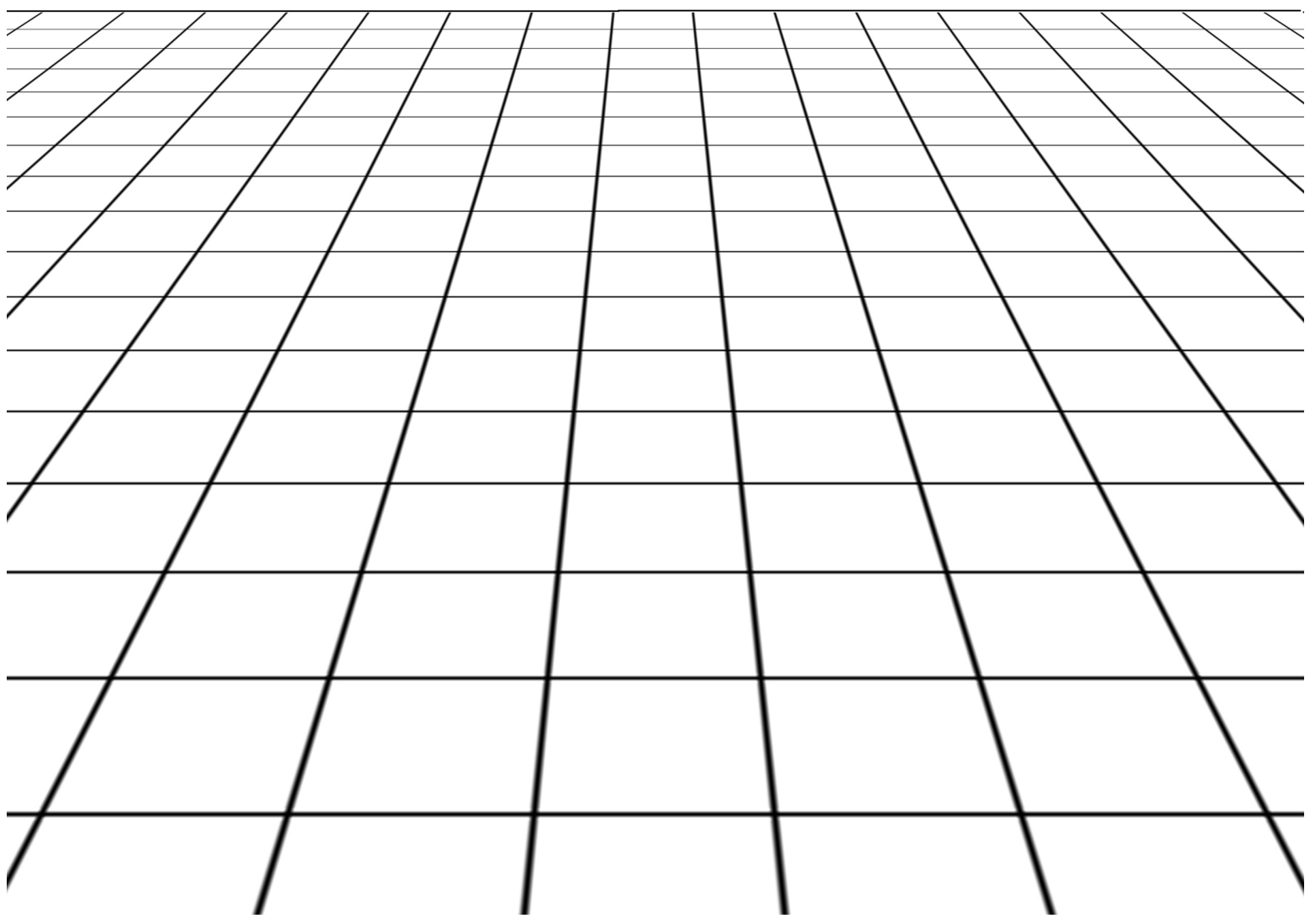
Scissors or precision knife & mat
PVA glue & small glue brush

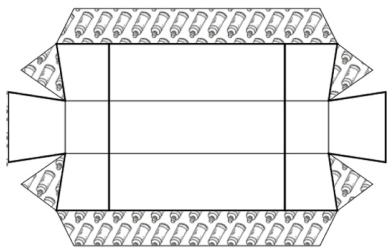
1. Colour in or paint all images, including landscape on the inside cover
2. Cut out the car, siren, fire and palm trees,
3. Fold the tabs on the car outward
4. Fold the sections of the car, including the siren lights
5. Brush glue onto tabs & press together until glue holds
6. Don't forget to add the flames! Glue to the back of the siren lights
7. Assemble the cross section base of the palm tree to stand it up
8. Place your finished diorama on an altar for spiritual comfort & mental clarity



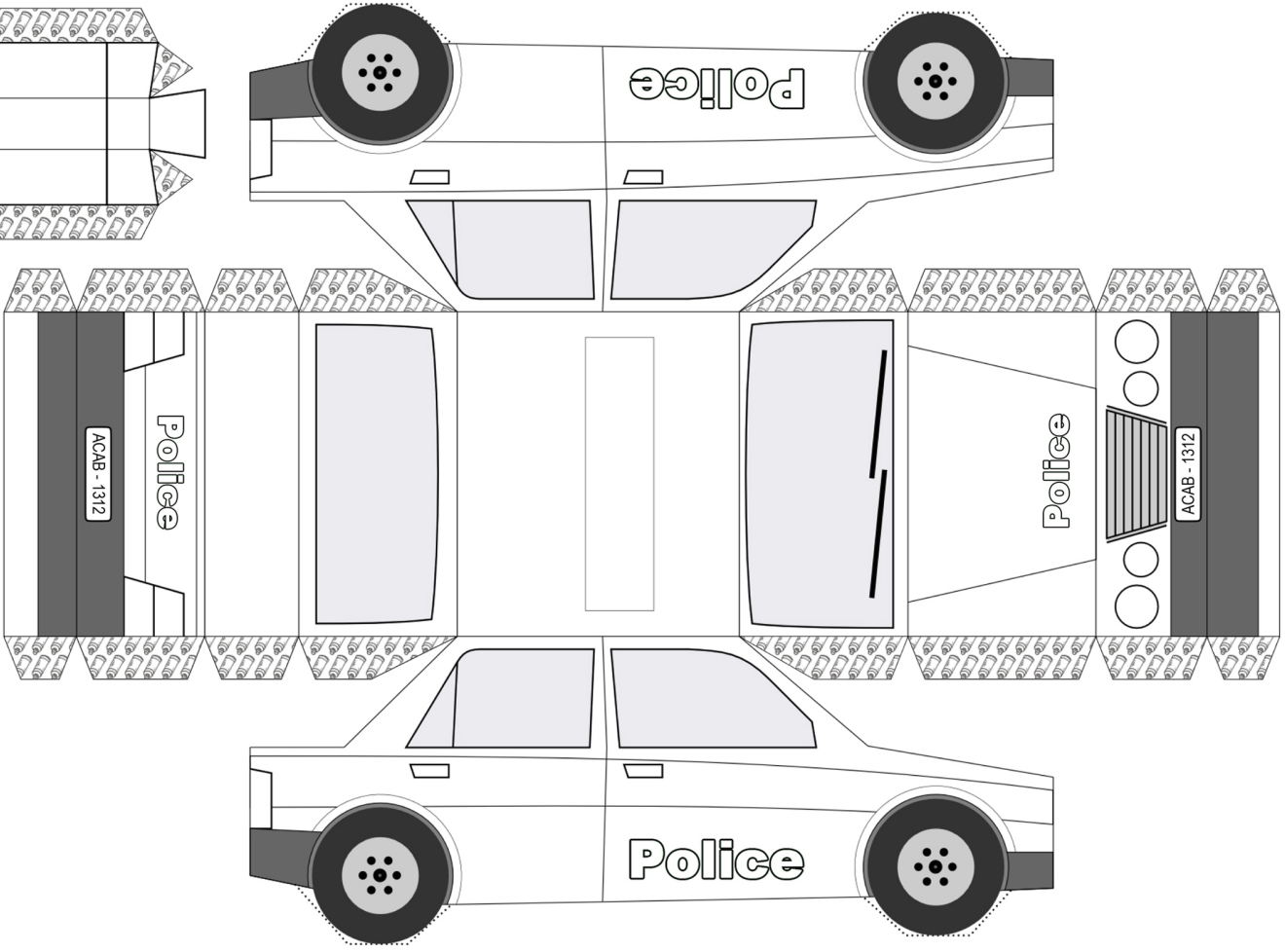
fire to the

DOI ICE





<-siren



<-areas to glue

